

lep
network



**Local Enterprise Partnership Chairs
Biographies 2023**

Mark Bretton MBE TD
LEP Network



Mark was appointed Chair of the LEP Network in September 2019. The LEP Network is the national body which brings all 36 LEPs together.

Mark was awarded an MBE in the King's Birthday Honours List 2023 for services to business, the economy and to charity, particularly during Covid-19. He is an independent consultant with 40 years' of wide-ranging business experience, including in several high-profile Government programmes. Mark was a Managing Director (Partner) in the leadership team of the professional services firm Accenture and before that worked for Plessey, Siemens, Royal Mail and Tata. He sat on the Business Leaders' Council of the charity Teach First for 13 years and is an Ambassador for Home Start Herts.

Mark has an MBA in Export Management and International Business from City, University of London Business School, and a BSc Econ (Hons) in Management Studies. He was a Royal Signals Reserve Officer (Major) and holds a Territorial Decoration. Mark was a member of the Secretary of State for BEIS' Levelling Up Taskforce, of the Minister for Local Government's Economic Recovery Working Group and the Business Action Council, all focused on helping the country grow out of the Covid-19 crisis. Mark joined the Hertfordshire LEP Board as Business Representative and Chair Designate in January 2016, and was Chair from June 2016 until March 2023.

www.lepnetwork.net

Andrew Smith OBE DL
Buckinghamshire LEP



Andrew always wanted to work in the film industry, then after being a civil servant, having a stint in politics, starting up his own business and training to be a scuba diving instructor, his dream came true and he went to work for Pinewood in 2008.

As Director of Corporate Affairs, Andrew has been instrumental in the development of the Pinewood site and development of the international reputation of the studio and in particular in developing strong investment links.

A Board member of Buckinghamshire LEP since 2012, Andrew has been instrumental in guiding and supporting the growth of the LEP and his knowledge of the film and creative arts sector has been invaluable in the development of this growth area for Buckinghamshire. Andrew is also a non-executive Director of Buckinghamshire Business First.

He is passionate about allowing everybody opportunity, especially the long-term unemployed and NEETs.

www.buckstvlep.co.uk

Alex Plant
Cambridgeshire
& Peterborough Combined Authority (The Business Board)



Alex became Strategy and Regulation Director at Anglian Water in 2017 and led for the company on its Business Plan and engagement with Ofwat for PR19 and the subsequent CMA Redetermination process. He is now taking forward the plans for new reservoir systems in the region to address the water scarcity challenges in the East.

Previously he has worked as Director of Regulation at Royal Mail, Executive Director for Economy, Transport & Environment at Cambridgeshire County Council, and Chief Executive of Cambridgeshire Horizons (the body overseeing the plans for sustainable new communities in Cambridgeshire).

Earlier in his career, Alex was Deputy Regional Director of the Government Office for the East of England, spent 4 years as Head of Economic Policy and International Aviation at the CAA, and worked in HM Treasury on competition policy, including leading the work on the 2002 Enterprise Act.

In addition to his role with Anglian Water, Alex is a Board Member for Water Resources East, and chairs the Regional Productivity Forum for East Anglia (as part of the wider £32m ESRC-funded Productivity Institute).

cambridgeshirepeterborough-ca.gov.uk/who-we-are/business-board

Clare Hayward MBE DL
Cheshire & Warrington
LEP



Clare co-founded, developed and sold Academee, a global leadership development consultancy, to Oliver Wyman, a division of Marsh and McLennan Companies in 2008. She was retained, post-acquisition, as Global Partner of Sales and Market Development within this Fortune250 group.

A successful businesswoman and entrepreneur focused on leadership and strategic engagement who has coached, facilitated and chaired boards, senior management teams and leaders across the globe over the last 20 years working in industry sectors including technology, banking and finance, natural resources, retail and manufacturing. Experience also includes investment funding and negotiating the sale and purchase of several businesses. Clare also has significant experience within the community, charity and local political landscape.

Clare is the Growth Director at Cirrus, a Leadership, talent and engagement consulting firm, working with FTSE 100 clients and is also a Deputy Lieutenant for Cheshire. Other roles include: Queen's Voluntary Award Assessment Board, East Cheshire Hospice Ambassador and Angel, and MMU MBA Advisory Board. Previous roles include: Chair of Make it Macclesfield and board member of Peaks and Plains Housing Trust.

www.cheshireandwarrington.com

Julie Kapsalis
Coast to Capital LEP



Julie has worked in economic development for over 15 years with a particular focus on enterprise, skills and social inclusion. She served as an advisor to the UK Government's task force on women's enterprise and has recently contributed to the Rose Review of Female Entrepreneurship. Julie is diversity champion for the LEP.

She is a Board Member at Gatwick Diamond Business and the Institute of Economic Development and is former Chair of the Chichester Chamber of Commerce & Industry.

Julie is Managing Director of Chichester College Group with responsibility for a portfolio of commercial businesses including a chain of childcare nurseries, examination board and international education.

Julie previously worked as director at the South East England Development Agency, managing a portfolio of contracts including Business Link and Finance South East. Prior to this she has a background in consumer marketing and PR. In 2012 she fulfilled a long-held ambition to work on the London 2012 Olympics and managed a legacy programme to encourage volunteering and community engagement in sport.

www.coast2capital.org.uk

Cornwall & Isles of Scilly LEP



**CORNWALL &
ISLES OF SCILLY**
LOCAL ENTERPRISE PARTNERSHIP

Awaiting details of new Chair.

www.cioslep.com

Lord Richard Inglewood Cumbria LEP



Richard Inglewood is a Cumbrian non-affiliated Member of the House of Lords. He was previously Chair of the boards of Cumbrian businesses Carr's Milling Industries plc, CN Group Ltd and Gen2.

Lord Inglewood has also held a number of ministerial positions during his career. He was the minister for broadcasting and for tourism during his time as Parliamentary Under-Secretary of State at the Department of National Heritage in the late 1990s. He

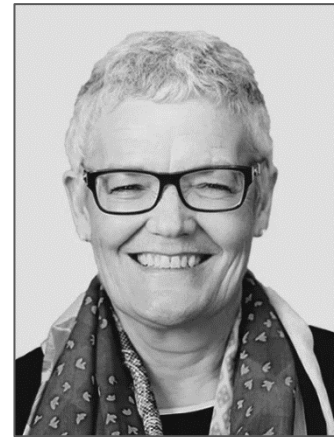
has also served twice as a regional MEP, first for Cumbria and Lancashire North and then for North West England.

He is President of Cumbria Tourism and has been Deputy Lieutenant for Cumbria since 1993 and Vice-Lord Lieutenant for Cumbria since 2012.

Lord Inglewood was educated at Trinity College, Cambridge and the Cumbria College of Agriculture and Forestry. He was called to the Bar in 1975, is a Chartered Surveyor (MRICS) and a Fellow of the Society of Antiquaries (FSA).

www.thecumbrialep.co.uk

Elizabeth Fagan CBE Derby, Derbyshire, Nottingham & Nottinghamshire



Elizabeth became Chair of the D2N2 Local Enterprise Partnership in July 2018. She is the recent former Non-Executive Chairman of Boots, having been appointed as the first female Managing Director of Boots in 2016.

Elizabeth sits on the board of the Office for Students, the independent regulator for higher education in England. She is also a Non-Executive Director of the Australian listed pooling solutions company Brambles. She is President of the Incorporated Society of British Advertisers and is a member and past President

of Women in Advertising and Communications Club. Elizabeth was also a member of the ASA Council for six years. In August 2013, she became a Fellow of the Marketing Society and, in the same year, was awarded a Cosmetic Executive Women UK, Achiever Award.

Elizabeth has been awarded an Honorary Degree of Doctor of Science by Nottingham Trent University and in January 2020 received a CBE in the Queen's New Year Honours list for her services to gender equality in business.

On the LEP Network Board, Elizabeth represents the East Midlands Region which covers D2N2 LEP, Coventry & Warwickshire LEP, Greater Lincolnshire LEP and Leicester & Leicestershire LEP.

www.d2n2lep.org

Cecilia Bufton
Dorset LEP

Cecilia has enjoyed a successful business career over 30 years, working in a range of companies from SMEs to multinational businesses and a Trade Association.

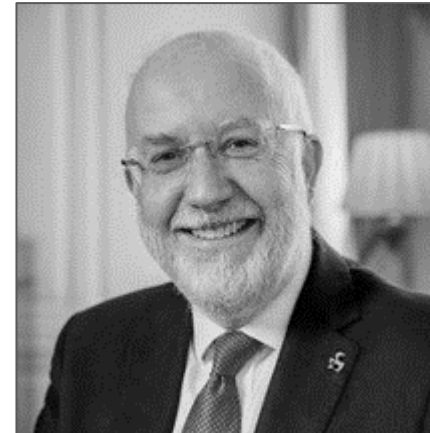
She has held senior level roles in strategic marketing, sales and business development and brings to the Board her experiences of working in medical, pharmaceutical, digital health and wellbeing companies.

Her career has involved the development and delivery of products and services that help change the way healthcare is delivered.

As a non-executive director, business adviser and charity chair, Cecilia's enjoys working with organisations, helping to create a compelling vision for their future and working with them to achieve their goals.

Cecilia is a science graduate with an MBA focused on international, strategic marketing and a certificate in Global Leadership from the University of Oxford. With her expertise, Cecilia is well placed to drive forward Dorset LEP's ambition to secure investment from the government and the private sector and really put Dorset on the map.

www.dorsetlep.co.uk

Michael Queen
Enterprise M3 LEP

Michael was formerly Chief Executive of 3i Group plc, the global investment company where after 25 years he retired in 2012 having developed 3i's activities in the infrastructure sector through founding 3i Infrastructure plc. In 1994 he was seconded to the HM Treasury to help to develop the potential for the Private Finance Initiative in the NHS as Head of the NHS Private Finance Unit. In 2002 Michael was Chairman of the British Venture Capital Association. Between 2010 and

2012 he was a member of the Prime Ministers Business Advisory Group.

He is currently Chair of the University of Surrey and Chair of the Council of University Chairs. He is a Director of BTL Limited, a company developing the Thames Tideway tunnel, Chair of Colter Capital Limited, a Director of TAQA, a Saudi based industrial company, and is also an advisor to an Indian Private Equity Group.

Between 2012 and 2018 he was President of Surrey 100, a Business Angel Group attached to the University of Surrey where he invested in a portfolio of early-stage technology companies. Michael has a BA (Hons) Industrial Economics from Nottingham University and is a Chartered Accountant.

www.enterprisem3.org.uk

Ruth Dooley
GFirst LEP



Ruth Dooley is a partner at Hazlewoods LLP. She is a chartered accountant and tax adviser for a wide range of companies and private clients and is a previous winner of South West Accountant of the Year.

She has been instructed in over 100 cases and has experience in family, professional negligence and commercial cases.

During her thirty years in Gloucestershire, she has contributed to the Prince's Trust, Fredericks Gloucestershire, BBC Radio Gloucestershire, the Honourable Company of Gloucestershire and she is a Visiting Fellow at the University of Gloucestershire.

www.gfirstlep.com

Anita Bhalla OBE (Interim Chair)
Greater Birmingham & Solihull LEP



Anita is currently Chair of Performances Birmingham plc (Town Hall and Symphony Hall), Chair of the Creative City Partnership, Governor of the RSC, Member of the Council of Warwick University, Non-ex Director of Birmingham Women's and Children's NHS Trust and Chancellor of Birmingham Children's University. Chair of the WM Mayor's Leadership Commission. Anita's media career has been extensive of which over 25 years with the BBC;

from setting up the BBC Asian Network to a news Correspondent, Documentary maker to being Head of Political and Community Affairs in England then Head and Editor of the BBC's Public Space Broadcasting and President of Circom (a European wide group of public service broadcasters). Anita has a strong commitment to public service and her portfolio in this area ranges from being a Commissioner on The Chancellor's Commission (Warwick University), member of Birmingham's Social Inclusion Commission to being the past chair of mac (Midlands Arts Centre), a previous chair of a Junior and Infant School, member of the governing body of Birmingham City University to currently being a Trustee of the Children's University. Anita has won several awards including the CRE's Race in the Media National Television News Award and the Windrush Broadcaster of the Year. In 2009 she was awarded an OBE for her services to Broadcasting and Communities. In 2012 Anita was the High Sheriff for the West Midlands. Anita has been awarded Honorary Degrees from Wolverhampton University, Birmingham City University and Warwick University. She is also a fellow of the Royal Society of Arts.

www.gbslep.co.uk

Professor Neal Juster
Greater Lincolnshire LEP



Neal took over as Vice Chancellor of the University of Lincoln in October 2021. He holds a BSc degree in Mechanical Engineering and a PhD in Computer-Aided Design, both from the University of Leeds. His research interests were around computer-aided design including rapid prototyping and the use of virtual reality in the design and manufacturing process.

He has an extensive experience in university management and has worked as the Senior Vice-Principal and Deputy Vice Chancellor at the University of Glasgow, Dean of Faculty of Engineering at the University of Strathclyde and Senior Lecturer in the Department of Mechanical Engineering at the University of Leeds.

He is a Director of UL Learning Resources Ltd, Riseholme Park Farms Ltd, ULEX and UoL Services Ltd. He is also Chair of the Members Committee for the University of Lincoln Academy Trust.

www.greaterlincolnshirelep.co.uk

Lou Cordwell
Greater Manchester LEP



Lou is Chair of the Local Enterprise Partnership, and lead for Communications, Digital Broadcasting and Skills Fund.

She is founder and CEO of multi award winning Manchester based digital design studio, magneticNorth. Founded in 2000, the company quickly established an international reputation with an award winning client portfolio. Today, the studio continues to work across a wide range of sectors, from education to placemaking, helping organisations to meet evolving audience needs by putting digital at the heart of their approach.

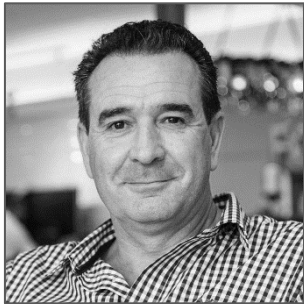
She is SME Representative for the GM LEP, and Chair of Design Manchester.

Lou is also a founding investor in AllBright and a passionate campaigner for gender equality in business and the tech industry.

Lou was awarded an OBE in the 2018 New Year's Honours for services to the creative and digital economy.

www.gmlep.com

Karl Tucker
Heart of the South West LEP



Karl is the Executive Chairman of Yeo Valley Farms Production Ltd and has been with Yeo Valley since 1996 having joined from the Quarrying Industry and before that having served in the British Army. Karl has been a key member of the leadership team that has seen Yeo Valley grow to be the UK's largest organic food brand and one of the largest, independent, family owned dairy businesses in the UK. Karl became Executive Chairman in February

2019 having been Managing Director since June 2017 and prior to that Joint MD from November 2013. Prior to this Karl was the Finance, IT and Procurement Director since 2006. As well as his role at Yeo Valley Karl sits on the SW CBI Council, is Chair of the SW CBI's Food and Drink Council and a member of the Somerset Growth Board.

Karl is also a trustee of the Bridgwater Education Trust, a body aiming to raise the aspiration, motivation and attainment levels of the young people of Bridgwater in Somerset. For 11 years until November 2018 Karl was a trustee of 'Young Bristol', a charity that runs and supports a number of open access youth clubs and two outdoor based activity centres together with running a number of positive activity programmes for the young people in Bristol. Having left Young Bristol Karl has recently joined the board of trustees of 'Feeding Bristol', a charity working to eliminate food poverty and food insecurity in the city of Bristol and became a Governor of the Merchants Academy school in Bristol in October 2019.

www.heartofswlep.co.uk

Adrian Hawkins OBE
Hertfordshire LEP

**Hertfordshire
Local Enterprise
Partnership**



Adrian was appointed independent Chairman of the Stevenage Development Board in March 2020.

Adrian was appointed to the Hertfordshire LEP Board in 2014, serving as Deputy Chair from 2017-2020, and was appointed Chair in March 2023. Adrian continues to Chair the LEP's Skills Advisory Panel, has championed the delivery of the Hertfordshire Opportunities Portal (HOP) and,

in collaboration with the University of Hertfordshire, delivered a voluntary network to provide support to businesses during the COVID pandemic.

Adrian is the Chairman and Founder of biz4Biz, an organisation established to support business owners and leaders, as well as a patron of business clubs, working alongside Hertfordshire MPs and Local Authorities and engaging with local business leaders. In 1981, Adrian founded Weldability Sif, which he grew from supplying one branded product in the UK, to many thousands internationally today.

In recent years Adrian has been a school and college Governor and Chairman of a multi-academy trust. In his tenure, Adrian established the Weldability-Sif Foundation, a charity that today supports more than 40 Welder-Training Studios across the UK, which have so far delivered 18,000 welder qualifications. The foundation works alongside awarding-bodies, incorporates the services of FE colleges and partners with businesses such as MakeUK and EDF, to address industrial skills pipelining for the UK workforce.

www.hertfordshirelep.com

James Newman OBE
Hull & East Yorkshire LEP



James is the founding Chair of the new Hull and East Yorkshire LEP (HEY LEP), which commenced operations from 1 April 2021. His executive career mainly consisted of being Group Finance Director over several PLCs.

In his Non-Executive career, he has been Chair or NED of a number of PLCs and other organisations.

James was the founding Chair of the Sheffield City Region LEP from 2010 to 2015, having retired following the signing of one of the first City Region Devolution Deals in October 2015. He is currently Chair of Finance Yorkshire and the South Yorkshire Community Foundation and has a number of other business and charitable roles, nationally and in Yorkshire.

A Chartered Accountant, former Master Cutler and Deputy Chairman of Sheffield Hallam University, James was awarded an OBE in 2017 for services to business, the economy and charity in Yorkshire and an Honorary Doctorate from Sheffield Hallam University in 2012 for services to business, enterprise and education in Yorkshire and Humber.

www.heylep.com

Debbie Francis OBE
Lancashire Enterprise
Partnership



Debbie Francis' career includes periods as Cities Executive for Arcadis UK, as Managing Director of Direct Rail Services (2016-20), and London North Western Route Finance & Commercial Director with Network Rail (2012-16). Debbie also held senior roles with Enterprise Managed Services and SAIC. Earlier in her career she worked for Bibby Line Ltd, Stanley Leisure and Pannell Kerr Forster Chartered Accountants. She is a Chartered Director

and Fellow of the Association of Certified Chartered Accountants (ACCA). In addition to her role at the LEP, Debbie also holds a number of non-executive roles: Chair, Harwich Haven Authority; Non-Executive Director, MDC Stockport; Senior Non-Executive Director, Loram UK; Chair, Penny Bridge CofE Academy; and Trustee/Director, Pave The Way.

Debbie received an OBE in the New Year's Honours. It was the latest in a number of awards and honours recognising her contribution to business and the community in recent years, including: winner of the 2019 IoD North West Director of the Year for Inclusivity, highly commended for Women in STEM at the Inspire Awards, awarded the honour of Woman with Edge at the prestigious Businesswoman of the Year Awards 2019 and inclusion as one of top 50 Northern Power Women in the 2019 Power List. In addition to an undergraduate degree from John Moores University and an MBA from the University of Manchester, Debbie is currently completing a PhD in Leadership at Manchester Metropolitan University.

www.lancashirelep.co.uk

Mark Roberts (Interim Chair), Leeds City Region LEP

Mark is a serial entrepreneur, non-exec Director and angel investor. He combines Board-level B2C marketing experience with e-commerce and digital innovation to help businesses rapidly scale. He has won several awards as the Co-Founder of Beer Hawk including Great British Entrepreneur of the Year (Small Business, 2017) and Business Person of the Year (SME National Business Awards, 2019). He set up Beer Hawk in 2012, scaled to a profitable business with over £100m revenue and successfully exited to a strategic buyer.

Before embarking on his own entrepreneurial journey, Mark built his commercial and innovation skills at a number of global blue-chip businesses, including Procter & Gamble, Lloyds Banking Group and Direct Wines. Now acting in a non-exec advisory capacity for Beer Hawk, he is Chair for the Leeds City Region Enterprise Partnership (LEP), and a Trustee for Red Kite Learning Trust as well as Deputy Chair of the West Yorkshire (WYCA) Climate, Energy & Environment Committee and LEP Representative for Transport for the North (TFN) Board.

Mark is passionate about improving education & skills – he was a Commissioner for the Future Ready Skills Commission (published 2020) and is passionate about encouraging entrepreneurship with an investment portfolio in early-stage businesses.

www.the-lep.com

Andy Reed OBE and Anil Majithia (Interim Co-Chairs) Leicester & Leicestershire LEP

Andy is the Director of SajelImpact, an organisation which offers a wide variety of bespoke support and advice to Sports Bodies, NGBs, Social Enterprises and Faith Charities, making sure their strategies and communications are effective with the key stakeholders in their sector and bringing social transformation projects to life. He was Labour & Co-operative MP for Loughborough between 1997 and 2010. Andy serves on a number of Sport Bodies, Christian organisations and local charities as a volunteer. In June 2012, Andy was awarded an OBE in the Queens Honours List for contribution to sport and the Community and in 2014, he was appointed a Professor of Sport Policy & Development at Liverpool John Moores University.



During his professional career of 38+ years, Anil has worked with numerous international organisations to deliver major transformational changes. Although he retired from full time employment in 2017, he has pursued his passion of supporting organisations around the education, health, and wellbeing agenda. To this effect, in addition to being appointed Co-Chair at LLEP, he is also a Vice-Chair at North Warwickshire and South Leicestershire Colleges, Non-Executive Director at George Eliot Hospital NHS Trust. He also Chairs the George Eliot Hospital Trust Charity and Chair of the Regional Advisory Board for Canal & River Trust East Midlands.

www.llep.org.uk

Asif Hamid MBE
Liverpool City Region LEP



With expert industry knowledge gained over a 30-year career in some of the world's leading outsourcing businesses, CEO and founder of The Contact Company, Asif Hamid MBE has redefined standards of customer experience since establishing the company 13 years ago.

Leading the company from just 12 team members to over 1,500 employees across multiple locations, Asif is a pioneer of new approaches to customer contact, ever searching for ways to redefine customers' expectations

and improve the customer experience through industry transformation and technological innovation.

Asif sits on several regional boards and is Honorary President of the Wirral Chamber of Commerce. Asif has a strong passion for the development of people. As one of the leading entrepreneurs in his field, his expertise is highly sought by local and national commercial organisations, as well as by MPs.

In 2017, Asif was awarded an MBE for his services to SMEs.

www.liverpoollep.org

C-J Green
New Anglia LEP



CJ Green is Co-Founder and Executive Director of BraveGoose, a technology driven Human Resources Advice solution.

Her career has been predominantly in HR in both the public and private sector. She was previously Chief People Officer and then Chief Executive Officer of a Suffolk-based firm with a global workforce of 26,000.

CJ is also a Trustee of Pepal who connect non-government organisations and global corporations to find solutions to social issues, she believes strongly in the capability of business as a force for good and feels passionately that the eastern region is an example of what is possible in that regard.

www.newanglia.co.uk

Lucy Winskell OBE
North East LEP

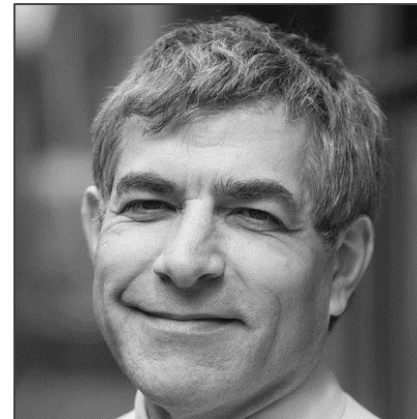
Lucy is Pro Vice-Chancellor (Employability & Partnerships) at Northumbria University.

She has been a member of the Executive team at Northumbria University since 2010, having made the transition into higher education following a 28-year career as a litigation lawyer.

Lucy's non-executive career has been focussed on economic growth and regeneration within the North East. Her regional roles have included Board Member of the North East Regional Investment Fund and North East Access to Finance (both supporting SME growth); non-executive Director of Government Office North East; Chair of the North East Industrial Development Board; Board Member of ING; Vice Chair of BE Group and a Member of CBI Regional Council.

Lucy has been Chair of the Board of the North East England Chamber of Commerce (NEECC) for six years and will stand down from this role shortly. She has also been a strong advocate for the region at a national level. As a member of Arts and Humanities Research Council she highlighted the importance of the cultural and creative sector in a regional economy, and as Vice Chair of the British Chambers of Commerce (BCC) she has ensured a regional voice forms part of BCC's lobbying and policy work.

www.northeastlep.co.uk

Professor Alistair Fitt
Oxfordshire LEP

Alistair was appointed as Oxford Brookes University's Vice Chancellor in February 2015.

Prior to Professor Fitt's current role at Oxford Brookes University as Pro-Vice Chancellor for Research and Knowledge Exchange, he worked at the University of Southampton for 22 years, latterly as the Head of the School of Mathematics and then Pro-Vice Chancellor International.

In 2014, Professor Fitt was listed in the Science Council's 100 leading practising scientists and became Chair of OxLEP in March 2023.

www.oxfordshirelep.com

Richard Stubbs
South Yorkshire LEP



Chief Executive, Yorkshire and Humber Academic Health Science Network

Richard is CEO of the Yorkshire & Humber Academic Health Science Network (AHSN), an organisation that connects NHS and academic organisations, local authorities, the third sector and industry to facilitate change across health and social care economies.

Prior to becoming CEO, Richard was AHSN's Commercial Director.

www.sheffieldcityregion.org.uk

Rachael Randall
Solent LEP



Rachael is Principal and CEO of HTP Apprenticeship College Ltd which she established in 2000.

Prior to that she was involved in Government funded training working for New Deal and a national apprenticeship provider.

Her roots are also firmly based in the world of hospitality, tourism and farming.

<https://solentlep.org.uk>

Sarah Dance
South East LEP



Sarah is a strategic consultant for the culture and creative industries, with over 25 years' experience in the creative sector.

She set up her own consultancy in 2002 and has led and worked on a wide range of cultural organisations and partnership projects, from England's Creative Coast through to the Legacy Trust's Olympic and Paralympic partnership project for the South East.

She has also worked with many cultural organisations on business and capital development, creative production, organisational change development, and leadership mentoring.

Sarah was named a top influential figure in the arts and creative world in the Alt Power 100 Artlyst 2021. She is Co-Chair of the South East Creative Economy Network and Chair of Creative Estuary and has led the visioning of Thames Estuary Production Corridor. She is on the Civic University Network Advisory Group and UAL Advisory Group for their UKRI funded modelling and supporting recovery of the UK's experience economy. She is also a fellow of the Royal Society of Arts.

www.southeastlep.com

Peter Horrocks CBE
South East Midlands LEP



Peter was Vice-Chancellor of The Open University from 2015 until April 2018. Prior to joining the OU, Peter was Director of the BBC World Service.

At the Open University Peter devised the university's strategy Students First bringing a new 'digital by design' approach to the university's teaching. He oversaw significant restructuring and the prioritisation of resources for student benefit. He also chaired FutureLearn, the UK's only higher

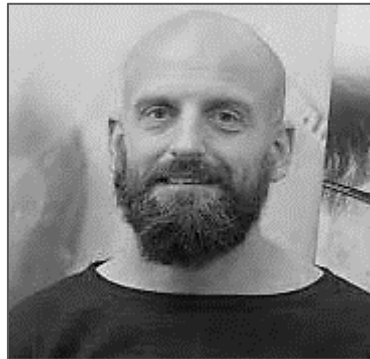
education open social learning higher education platform. FutureLearn has over 7 million users globally.

At the BBC, Peter held several roles, including being editor of Newsnight and Panorama, Head of Current Affairs, Head of TV News and Head of Multimedia News. He won two BAFTA awards for his journalism. In 2015 Peter was awarded a CBE for Services to Broadcasting. Peter volunteers as a careers adviser in schools and is the chair of members for a local academy schools trust.

On the LEP Network Board, Peter represents the Ox-Cam-Arc region which covers Oxfordshire LEP, Buckinghamshire LEP, Cambridgeshire & Peterborough Business Board, New Anglia LEP, and South East Midlands LEP.

www.semlep.com

Alun Rogers
Stoke-on-Trent and Staffordshire LEP



Alun co-founded Stafford-based IT firm risual with business partner Richard Proud in 2005, building on his previous experience as an IT consultant.

The duo self-funded the launch of the business, which has gone on to win numerous awards and become a Microsoft strategic partner for public and private sector clients. The firm provides IT consultancy, systems management and service support, plus a suite of IT systems, and today employs some 120 staff.

Beginning with Stafford College, risual has partnered with a range of FE colleges across the country to set up risual academies providing training in digital and IT skills.

www.stokestaffslep.org.uk

Paul Moorby OBE
Swindon & Wiltshire LEP



Paul founded Chipside Limited in 2003, a rural employer in Brinkworth.

The company is a leading UK tech company, providing Mipermit services to both local government and the public across the UK.

Paul has worked with local government on digital transformation projects for over 25 years.

He was awarded an OBE in 2019 for services to promoting UK Technology abroad.

In April 2019, Mipermit was recognised with a Queen’s Award for Enterprise, Innovation.

On the LEP Network Board, Paul represents Western Gateway region which covers GFirst LEP, West of England LEP, and Swindon & Wiltshire LEP.

www.swlep.co.uk/

Siobhan McArdle
Tees Valley LEP

Siobhan is Managing Director of The Strategy House: a consultancy business specialising in strategy development, turnaround, and transformational change for large global corporate organisations and high growth SMEs, both nationally and internationally, a business she founded over twenty years ago. Siobhan is also CEO of L3COS, a blockchain-based, technology platform provider, focused on developing the enabling technology required to deliver disruptive change across global marketplaces and supply

chains, underpinned by a first to market, regulated digital exchange and international payments system.

Her first role as a graduate trainee was with the former Tees and Hartlepool Port Authority. She then spent eight years with PwC in both their Leeds and London Bridge offices, working on corporate change and restructuring prior to setting up her own business in 2001. Siobhan was appointed as Chief Executive of South Tees Hospitals NHS Foundation Trust to deliver its 3-year financial turnaround programme.

Appointed as Chair of the Tees Valley LEP in 2022, Siobhan has been working on the reconfiguration of the LEP, in partnership with the Tees Valley Combined Authority and Local Authorities.

www.teesvalley-ca.gov.uk

Bob Beveridge
Berkshire LEP

Bob has a diverse business career in both large organisations and SMEs within the consumer goods and technology sectors and has lived in Berkshire for 39 years.

Bob spent 12 years at Mars Chocolate in Slough, in finance and sales roles, ultimately becoming pan-European Head of Finance.

After five years with United Biscuits he moved to the technology sector becoming CFO of Cable & Wireless

Communications plc.

After two further roles in the technology sector he returned to consumer goods as CFO of McBride plc, manufacturer of private label household products. Since 2010 he has been a portfolio non-executive director across a diverse range of business sectors: healthcare, technology, manufacturing and food.

www.thamesvalleyberkshire.co.uk

Sonia Roberts
The Marches LEP

After a successful commercial career as director with Laura Ashley, Sonia moved to the charitable sector in 2003 as CEO of Landau, one of the UK's most prestigious supported training and employment organisations. She has led the charity from a £200k to a £4.5m turnover business and increased in service delivery across the UK.

Landau is a Centre of Excellence for Individual Placement Support (IPS) supporting people with enduring mental health conditions into employment. It holds the silver covenant

award in recognition for its work with veterans and recently was awarded the Queen's award for Enterprise in recognition of their social mobility work with people facing multi barriers to employment.

Sonia became Chair of the LEP in November 2022. She is the champion and LEP board representative for equality and diversity. She is also the champion for the community & voluntary sector and chairs the LEP's Performance, Risk and Monitoring Committee.

www.marcheslep.org.uk

Richard Bonner
West of England LEP

Richard is the UK Operations Director and City Executive Bristol at Arcadis.

A Chartered Civil Engineer, he has a background in design and consultancy working generally in the building sector with both public and private sector clients.

He is responsible for the Operations of Arcadis in the UK, and as the Bristol City Executive for Arcadis leads the business to market shaping propositions to help the city region grow and develop through sustainable urbanisation and creating competitive advantage.

Richard is the President of the Bristol Chamber of Commerce and Initiative, and a Director of Business West.

Richard is a nominated SME representative on the LEP Board and the LEP Chair.

www.westofengland-ca.gov.uk

Paul Walker MBE
Worcestershire LEP



Paul is a Chartered Engineer, with B.Tech and M.Phil degrees in Materials Science from Bradford University. He has held a variety of technical and management roles in the steel industry before establishing his own management consultancy.

In 1993, he joined Malvern Instruments, a company which designs and manufactures scientific instrumentation, where he was Managing Director until

he retired in 2017. Paul was awarded an MBE for services to the Industry in 2012.

Paul has held numerous board roles, most notably being Chair of the Herefordshire and Worcestershire Chamber of Commerce for five years, and he is currently a Non-Executive Director of the Malvern Hills Science Park since 1999 and Vice Chair of King's School Worcester.

www.wlep.co.uk

Helen Simpson OBE
York & North Yorkshire LEP



York & North Yorkshire
**LOCAL ENTERPRISE
PARTNERSHIP**



Helen is Chair of the York & North Yorkshire Local Enterprise Partnership and co-Chair for the NP11 Place programme.

Born and bred in Yorkshire, Helen is an experienced Chair and Board Member, with a track record in leading organisations whilst undergoing change, including enabling digital innovation, business growth and community development.

Her non-executive experience follows a senior executive career with BT where she led digital growth businesses and major deals, developed strategy and built commercial partnerships before leading BT's volunteering programme globally. Helen currently Chairs Broadacres Housing Association, a provider of social housing, extra care and specialist provision in North Yorkshire. She also serves as a Trustee with St Martin-in-the-Fields Charity in their work with the homeless and vulnerably housed.

Helen brings expertise in leadership, strategy development, partnerships and collaboration including with government, social housing and charity and community development, as well as a passion for diverse leadership, including helping women leaders fulfil their potential.

www.ynylep.com